



research



Factsheet

Erasmus MC  
University Medical Center Rotterdam



Patient Driven

# RESEARCH: THE WORLD TOP IS OUR GOAL

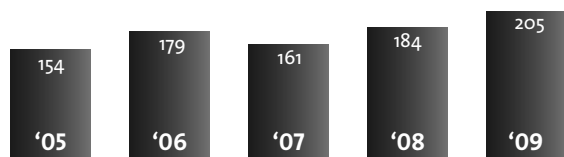
## ABOUT ERASMUS MC

Erasmus MC, University Medical Center Rotterdam was formed in 2002 from a merger of the Faculty of Medicine and Health Sciences of Erasmus University Rotterdam (EUR) and the Academic Hospital Rotterdam. It is the largest of the eight university medical centers in The Netherlands. Erasmus MC is an internationally recognized center for high-quality, compassionate patient care, highly valued knowledge transfer and high-quality knowledge development in the fields of illness and health. Erasmus MC is striving to become one of the best medical research institutes in the world.

### Erasmus MC research staff 2008

FTE scientific staff 1 <sup>st</sup> budget source	498
FTE scientific staff 2 <sup>nd</sup> , 3 <sup>rd</sup> and 4 <sup>th</sup> budget source combined	570
Total FTE scientific staff	1068

### Number of PhD graduates



### Citation scores

Period	P <sup>1)</sup>	CPP <sup>2)</sup>	CPP/ FCSm <sup>3)</sup>	CPP/ JCSm <sup>4)</sup>	JCSm/ FCSm <sup>5)</sup>
2005-2008					
All UMCs	40,201	5.11	1.37	1.11	1.24
Erasmus MC	8,312	6.22	1.53	1.14	1.33

- 1) P is the number of international scientific publications.
- 2) CPP is the average number of citations per publication excluding self-citations.
- 3) CPP / FCSm (crown indicator) is the impact of the publications compared to the worldwide average in the scientific fields in which they have been published.
- 4) CPP/JCSm is the impact of the publications compared to the worldwide average in the journals in which they have been published.
- 5) JCSm / FCSm is the impact of the journals in which has been published compared to the impact of the ISI scientific fields in which has been published.

### Research budget 2008

Basic financing 2008 (1 <sup>st</sup> budget source)	EUR 38 M	31%
EMF 2008 (2 <sup>nd</sup> , 3 <sup>rd</sup> and 4 <sup>th</sup> budget source combined)	EUR 85 M	69%
Total	EUR 123 M	



## RESEARCH SCHOOLS

At Erasmus MC we believe that progress in medicine and health care is only feasible if fundamental biomedical research, clinical research and health sciences closely collaborate to enhance synergy. Erasmus MC Graduate School is an umbrella organization for five internationally renowned, KNAW (Royal Netherlands Academy of Arts and Sciences) accredited, research schools. These research schools work closely together to create this synergy and to offer young people an outstanding basis for a career in medical sciences and life sciences, by organizing five MSc and five PhD programs. Most departments participate in these research schools.

### CARDIOVASCULAR RESEARCH SCHOOL ROTTERDAM - COEUR

COEUR promotes basic, translational and clinical cardiovascular research, aimed at improving the understanding of the pathophysiology as well as the prognosis and quality of life of patients with cardiovascular disease. It also trains future national and international leaders in the cardiovascular field through a systematic scientific education and training program.

**Participants:** Erasmus MC

**Website:** [www.coeur.nl](http://www.coeur.nl)

### GRADUATE SCHOOL NEUROSCIENCES AMSTERDAM ROTTERDAM - ONWAR

The aim of ONWAR is to coordinate the training program of the PhD-students participating in the school; to organize courses, lectures, annual meetings in the field of neurosciences; to stimulate collaboration in neuroscientific research between the various participating institutes and to stimulate improvement of the quality of research and education in the neurosciences.

**Participants:** Erasmus MC, VU University Amsterdam, VU University Medical Center, University of Amsterdam, Academic Medical Center and Royal Netherlands Academy of Arts and Sciences

**Website:** [www.onwar.nl](http://www.onwar.nl)

### MEDICAL GENETICS CENTER - MGC

MGC offers its PhD students a number of courses in the broad field of biomedical science, supplementary to the usually highly specialized research programs. This is of great value to both the MGC and the PhD student, improving their marketability and thereby increasing their chances on the job market.

**Participants:** Erasmus MC and Leiden University Medical Center.

**Website:** [www.medgencentre.nl](http://www.medgencentre.nl)

### MOLECULAR MEDICINE - MOLMED

MolMed stimulates clinically oriented molecular biomedical research. Its core business is translational research. The four main themes of the school are endocrinology, metabolism and ageing; hematopoiesis, lymphopoiesis and immune regulation; solid tumors; infections and host response.

**Participants:** Erasmus MC

**Website:** [www.molmed.nl](http://www.molmed.nl)

### NETHERLANDS INSTITUTE FOR HEALTH SCIENCES - NIHES

Its mission is to contribute the identification of determinants of health and disease, prognostic treatment of disease, the identification of factors determining the efficiency of health services and to further develop methods for the acquisition and interpretation of medical data.

**Participants:** Erasmus MC, University of Amsterdam, Netherlands Cancer Institute, and the National Institute for Public Health and the Environment.

**Website:** [www.nihes.nl](http://www.nihes.nl)



## RENOWNED PERSONAL GRANTS

### INNOVATIONAL RESEARCH INCENTIVES SCHEME

Veni: Veni is a prestigious NWO (The Netherlands Organisation for Scientific Research) grant for excellent researchers for a period of up to three years after having gained their PhD. Those selected constitute the best 10-20% of their age group. The grant is for EUR 250,000.

In 2009, four Erasmus MC researchers obtained a Veni grant, namely:

- Dr. Laura Gutierrez (Cell Biology)
- Dr. Vincent Jaddoe (Pediatrics)
- Dr. Stefan Klein (Biomedical Imaging Group)
- Dr. Judith Rietjens (Public Health)

Vidi: Vidi is a prestigious NWO grant for excellent researchers for a period of up to eight years after having gained their PhD. Those selected constitute the best 10-20% of their age group. The grant is for EUR 800,000.

In 2009, five Erasmus MC researchers obtained a Vidi grant, namely:

- Dr. Tom Cupedo (Hematology)
- Dr. Maureen Eijpe (Cell Biology)
- Dr. Steven Kushner (Psychiatry)
- Dr. Joyce van Meurs (Internal Medicine)
- Dr. Henning Tiemeier (Epidemiology)

Vici: Vici is a very prestigious NWO grant for excellent researchers for a period of up to 15 years after having gained their PhD. Those selected have successfully demonstrated the ability to develop their own innovative line of research and constitute the best 10% of their age group. The grant is for EUR 1.5M. At the beginning of 2010 an Erasmus MC researcher obtained a Vici grant, namely:

- Dr. Joost Gribnau (Reproduction and Development)

## EUROPEAN RESEARCH COUNCIL

The European Research Council awards Advanced Investigator Grants to experienced European top scientists. Ab Osterhaus (Virology) was one of the 16 Dutch researchers to have been awarded the grant at the beginning of 2010. The grant is for a maximum of EUR 3.5M.

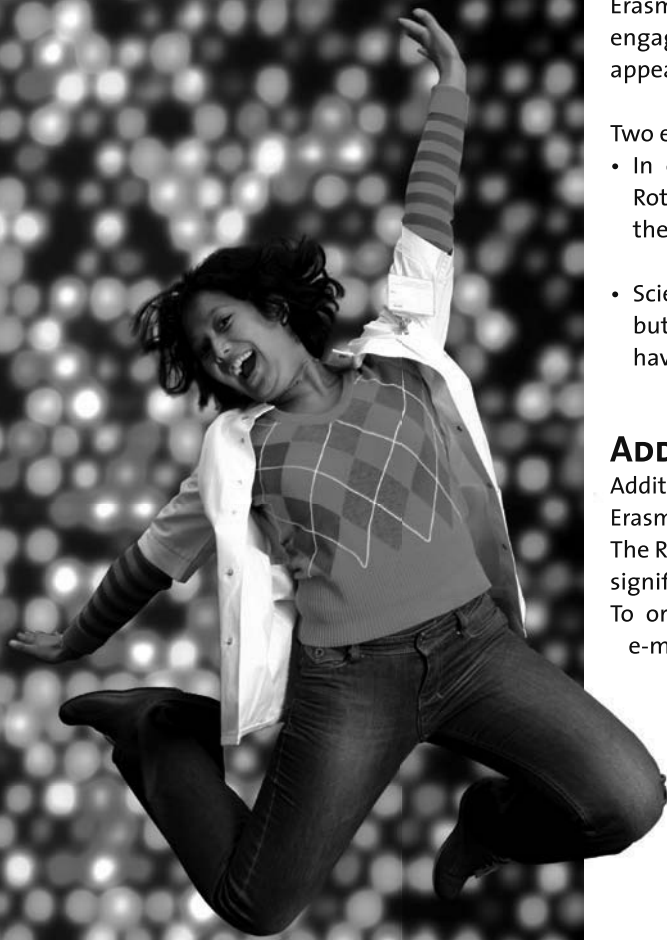
## KNOWLEDGE TRANSFER

At the end of 2009, Erasmus MC Holding B.V. was comprised of 21 companies with a total turnover of EUR 23.2M. In 2009, three new companies were launched and five were in the process of being formed. The turnover in 2010 is expected to be EUR 19.7M.

Furthermore, Erasmus MC has established an incubator to help start-up companies. The incubator supports researchers starting an innovative company through services such as advice, business plans, accommodation etc. In 2009, there were 41 participants, 28 of whom have already started a company thanks to the support of the incubator.

Erasmus MC generates a stream of intellectual property on various aspects of biomedical and clinical research. The financial benefits of intellectual property are reinvested in the research infrastructure and in attracting and retaining research expertise. In 2009, 12 new patents were applied for.





## **MEDICAL ETHICS REVIEW COMMITTEE (METC)**

In 2009, the METC approved 386 studies.

### **SOCIAL IMPACT**

Two aspects are important when it comes to the social value of research, namely, taking *responsibility* and *accountability*. The work does not stop at the walls of Erasmus MC. Erasmus MC has consciously chosen to be engaged in society. Erasmus MC presents a number of appealing examples in an annual brochure.

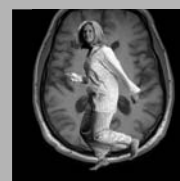
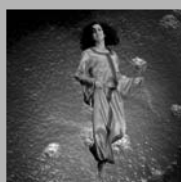
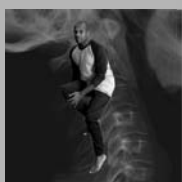
Two examples from the 2008 brochure:

- In order to improve the health of people living in Rotterdam, the municipal administration has asked the advice of Erasmus MC.
- Scientists not only develop new insights and therapies but sometimes they also show that existing remedies have no benefit at all.

### **ADDITIONAL INFORMATION**

Additional information on research carried out by Erasmus MC can be found at [www.erasmusmc.nl/research](http://www.erasmusmc.nl/research). The Research Annual Report and a brochure on the social significance of scientific research are published annually. To order a copy or for other queries, please send an e-mail to [research@erasmusmc.nl](mailto:research@erasmusmc.nl).

Publication date: July 2010



**Erasmus MC**  
University Medical Center Rotterdam  
*Erasmus*